

L A I R

bAuplanung und entweRfen

L I T T L E
H E L -
P E R S

K I T I N T E R N A T I O N A L
S U M M E R S C H O O L

0 3 - 1 1

A U G U S T

1 9 /

A R
Prof. Simon Hartmann

Andjela Brašanac
Josep Garriga
Benjamin Krüger
Mariana Santana
Richard Sekinger

Jonas Lauinger
Wenzel Meyer
Rasmus Zirlewagen

Gebäude 20.40, Raum 222
KIT Campus Süd
Englerstraße 7
76131 Karlsruhe

T +49 (0) 721 608 42154

F +49 (0) 721 608 44116

M bauplanung@ekut.kit.edu

INHALT

ABOUT	5
LITTLE HELPERs:	7
GENERAL AIMS	9
CONTEXT.	13
KIT CAMPUS SÜD	13
SITE. ALTES STADION	17
INTERVENTION CRITERIA(S)	21
GIVEN LOCATIONS:	22
RESOURCES	25
TUTORS	27
APPLICATION PROCESS	29
IMPORTANT FACTS	31
SCHEDULE	32

ABOUT

KIT Fakultät für Architektur will end the academic year 2019 with the first International Summer School in which all students will mix in teams to develop spatial interventions at KIT Campus. These interventions will aim at establishing and enabling dialogues and encounters among all students and members of the university community, as well as engaging with Karlsruhe citizens and its different communities. For 9 days beginning in August 2019, the KIT Campus Süd will become a site for building together, thinking together and living together.

Come and join KIT International Summer School!

WHAT	Design&Build workshop
WHERE	KIT Campus Süd, Karlsruhe
WHEN	Saturday Aug 3 - Sunday Aug 11
WHOM	KIT & international students



Bell Square Pavilion,
Assemblage

LITTLE HELPERs:

Friendly devices that are made to help others out of free will.

The increasing commercial privatization of the open spaces of the public realm (public squares, streets, parks, gardens...), together with an excessive programming of the urban space and the leisure activities, have left very little place for everyday encounters.

Little helpers are understood here as exploratory devices, architectural interventions capable of enabling other possibilities of being together and of establishing the common.

They are friendly devices that enhance the places and situations in which they appear; indeed, they create new situations for encounters and social exchange.

Can we think of architectures that promote other cultures of living and sharing?

Can we think of cities made of truly shared, rather than commercial public spaces?

Can we think of architecture as a 'gift'?



Table worn by 4 people, A.Wexler

Speleological shelter, LiAi studio



GENERAL AIMS

1

MEET & MIX

Groups include students from different years and disciplines and from abroad, who share their different backgrounds, skills and expertise.

4

EXPOSURE & VISIBILITY

KIT Fakultät für Architektur visits the rest of the campus and the city, communicating, initiating and establishing dialogues with other students and university-related actors. Student life is one of the assets of the city.

2

COLLABORATIVE WORK

The workshop encourages communication and cooperation. Individuals and Teams have to work together in order to share tools and materials as well as to organize their actions and achieve successful results.

5

ENGAGED RESEARCH

Architecture can be about encounters in space, sensitive material tectonics and social urban exploration, engagement and transformation.

3

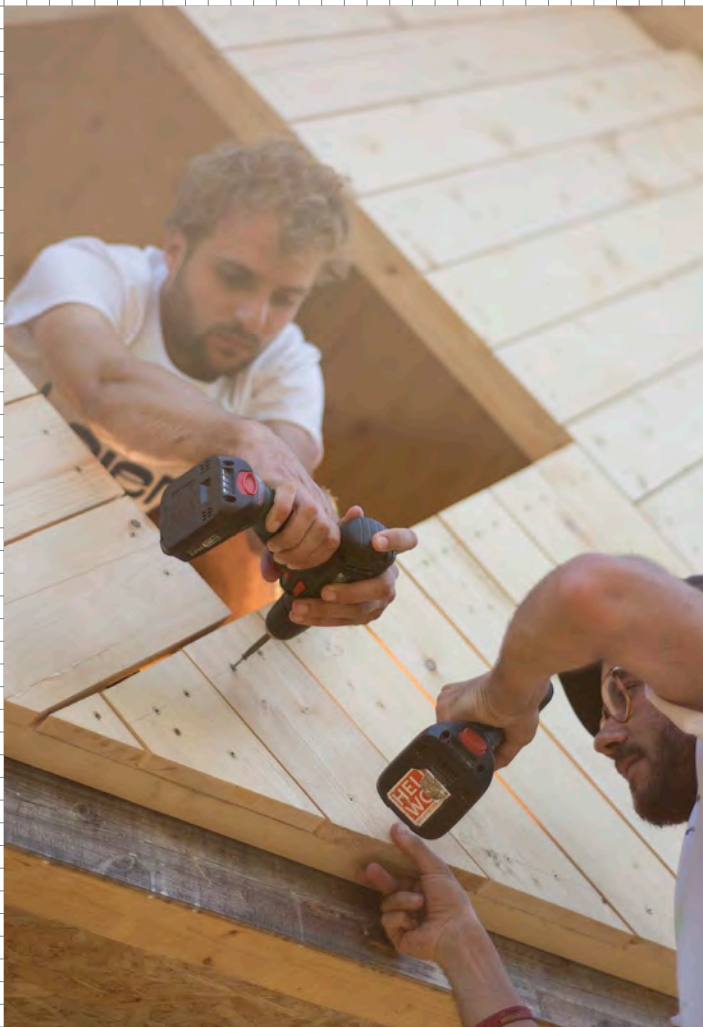
VIBRANT MOMENT WITHIN THE ACADEMIC YEAR

The workshop has a playful, yet challenging dimension that completes and complements the academic year.

6

PROMOTING A RE-USE CULTURE

The Summer School fosters the harvesting and the refining of existing available resources.



HelloWood 2018, Office ShopHouse



the Fountain House; Raumlabor



Rotunda, Alexander Brodsky



Hanging from a
Dome,
Buckmister Fuller



CONTEXT.

KIT CAMPUS SÜD

KIT is one of the largest research and educational institutions in Germany and one of the leading universities in the engineering and natural sciences in Europe. The Karlsruhe Institute of Technology is distributed over several locations; while the campus north is situated in the administrative district of Karlsruhe near Eggenstein-Leopoldshafen, the campus south is about 10 km away in the heart of the city of Karlsruhe. The campus SÜD occupies the east segment of the fan-shaped city layout, with immediate neighbourhood to the castle and the city center.

It is defined by the first three axial roads, being from east to west: Richard Willstätter Allee, Engesserstraße and Waldhornstraße. The northern boundary of the campus merges with the recreation area of the pheasants garden and the Forest.

Its urban fabric has been developed over time, with a built form made of mixed typologies and architecture styles dating from different periods of time.

The building typologies of the campus span from auditorium buildings, institute buildings, laboratories and experimental facilities, administration buildings, turbinehalls, Gyms, disposal stations, and libraries. The hard built-form of the campus contrasts with the idyllic pheasants gardens and its pleasure pavillions.

Today, the visual identity of the KIT Campus outdoor spaces is mainly dominated by car parkings below trees, and most of the buildings are not made to engage with the student community neither with a broader public.



Karlsruher Institut für Technologie

LAGEPLAN CAMPUS SÜD

KIT-Standorte
Deutschland



Standortsuche

Service-Telefon +49 721 608 1000

08.00 – 18.00 Uhr

Campuspläne als App

www.pkm.kit.edu/navigator



KIT-Campus Süd

Lieferanschrift:
Kaiserstraße 12
76131 Karlsruhe



Hörsäle (HS):

Anorganische Chemie, AOC 101–501 (30.45)
Architektur, HS 9 u. HS 37 (20.40)
AUDIMAX, HS am Forum (30.95)
Baugenieure, großer und kleiner HS
HS 101, HS 102 und HS 602 (10.50)
Benz, ehemals HMU (10.21)
Chemie, HS I–III (30.41)
Chemie, Neue Chemie (30.46)
Criegee (30.41)
Daimler, ehemals HMO (10.21)
Eiermann (20.40)
Elektrotechnik, kleiner ETI (11.10)
Engelbert-Arnold, EAS (11.10)
Engesser, HS 93 (10.81)
Engler-Bunte, EB (40.11)
Fasanengarten, HSaF (50.35)
Gaede (30.22)
Gerhosen (30.21)
Grashof (10.91)
Hertz (10.11)
Hochspannungstechnik, HSt (30.35)
HS 006 (11.21)
HS 62 (10.81)
HS 107 (50.31)

Engesserstraße 15
Englerstraße 7
Straße am Forum 1

Reinhard-Baumeister-Platz 1
Wilhelm-Nusselt-Weg 2
Fritz-Haber-Weg 2-6
Engesserstraße 15
Fritz-Haber-Weg 2-6
Wilhelm-Nusselt-Weg 2
Englerstraße 7
Engelbert-Arnold-Straße 5
Engelbert-Arnold-Straße 5
Otto-Amman-Platz 1
Engler-Bunte-Ring 1
Gotthard-Franz-Straße 7
Gaede (30.22)
Engesserstraße 9
Engelbert-Arnold-Straße 4
Kaiserstraße 12
Engesserstraße 11
Engesserstraße 20
Otto-Amman-Platz 1
Am Fasanengarten 3

G 6
E/F 7
H 5/6

H 8
G 8
G 5/6
G 6
G 5/6
G 8
E/F 7
F 7
F 7
H 7
G/H 4/5
J 4
E 5/6
F 6
F 7/8
F/G 8
F 6
G 7
H 7
K 4

HS 111 (20.13)
Informatik, HS 101 (50.34)
Kollegium am Schloss, HS 001 (20.13)
Lehmann (30.22)
Lichttechnik, LT (30.34)
Maschinenbau, oberer und mittlerer HS (10.91)
Messtechnik, MT (30.33)
Neuer HS (20.40)
Nusselt (10.23)
Nachrichtentechnik, NT (30.10)
Physik, kl. HS A, kl. HS B (30.22)
Rudolf-Plank, RPH (40.32)
Redtenbacher (10.91)
Sportinstitut, HS Sport (40.40)
Theodor-Rehbock, HS 59 (10.81)
Tulla (11.40)

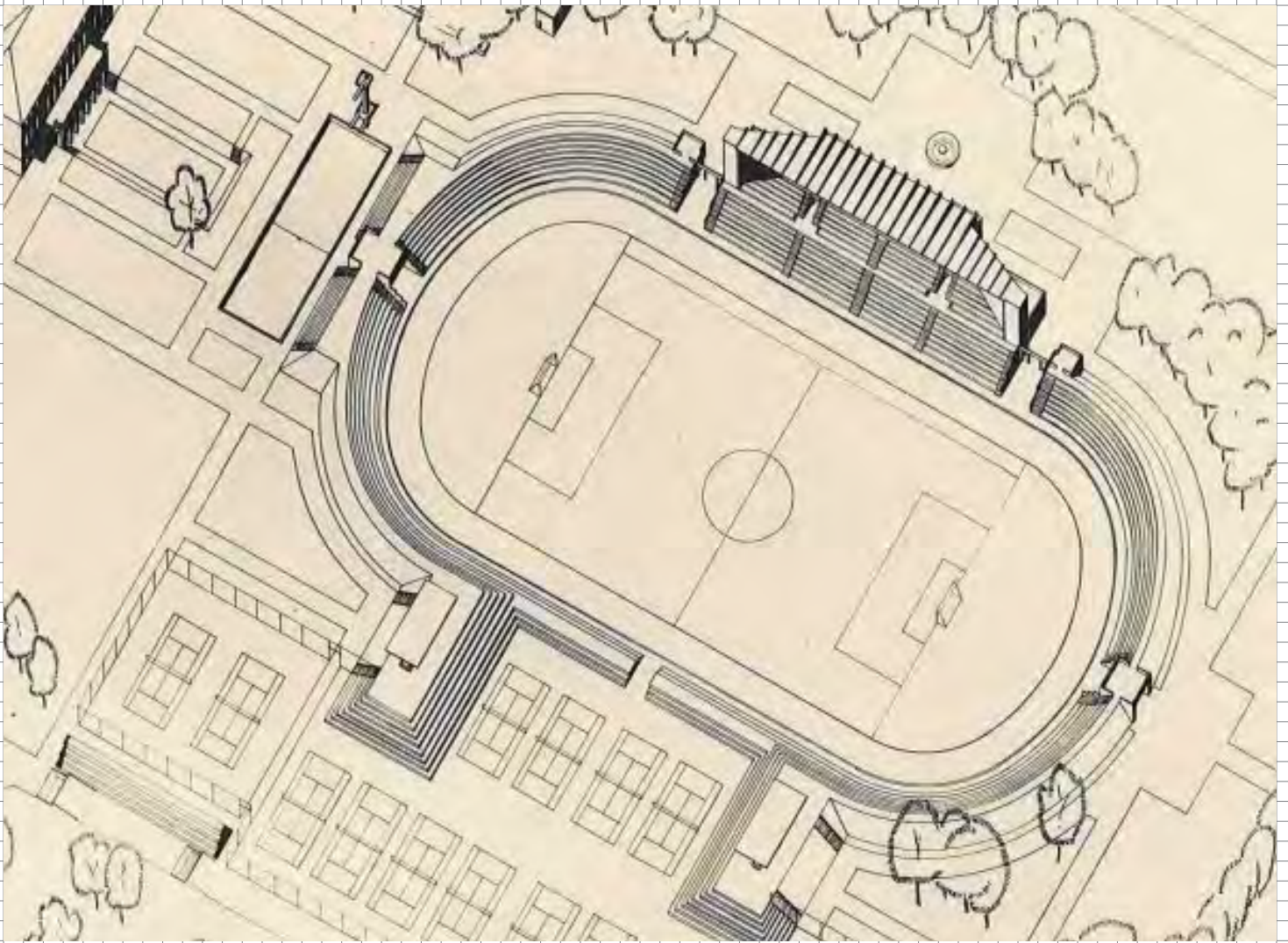
Schlossbezirk 13
Am Fasanengarten 5
Schlossbezirk 13
Engesserstraße 7
Engesserstraße 13
Engelbert-Arnold-Straße 4
Fritz-Haber-Weg 1
Englerstraße 7
Kaiserstraße 10
Engesserstraße 5
Engesserstraße 7
Engler-Bunte-Ring 21
Engelbert-Arnold-Straße 4
Engler-Bunte-Ring 15
Otto-Amman-Platz 1
Englerstraße 11

C/D 6
J 4/5
C/D 6
E 5/6
F/G 6
F 7/8
G 6
E/F 7
G 8
E 5
E 5/6
I 4
F 7/8
H 3
H 7
F 7/8

Warnhinweise

- Interne Notrufnummer 3333
- Auf dem Campus gilt die Straßenverkehrsordnung.
- Höchstgeschwindigkeit 30 km/h.
- In ausgewiesenen Verkehrsbereichen Schrittgeschwindigkeit.
- Vorfahrtsregel „rechts vor links“ beachten.
- Sicherheitsbereiche dürfen nur unter Beachtung örtlicher Regularien betreten werden.





Hermann Reinhard Alker, 1930

SITE. ALTES STADION

The Altes Stadion is a listed building at the south campus of the KIT, of which today only the tribune building is preserved.

The stadium was built as a sports facility for the Technical University Fridericiana in 1930. It was designed by Hermann Reinhard Alker (a teacher at the architecture department) as part of a wider sports campus with a north adjacent tennis and practice fields and an east-facing swimming pool.

The tribune building was planned as the pivot of the geometric layout of the stadium, and it was supposed to offer 800 covered seats.

The building is built in an innovative reinforced concrete construction with a 11 m cantilevered and unsupported roof. Beneath the grandstands there is a sports hall with an almost sacral character.

The university stadium became the preferred Nazi parade ground after 1933. In addition to the student's sport activities, it was used until the 1950s for larger events too.

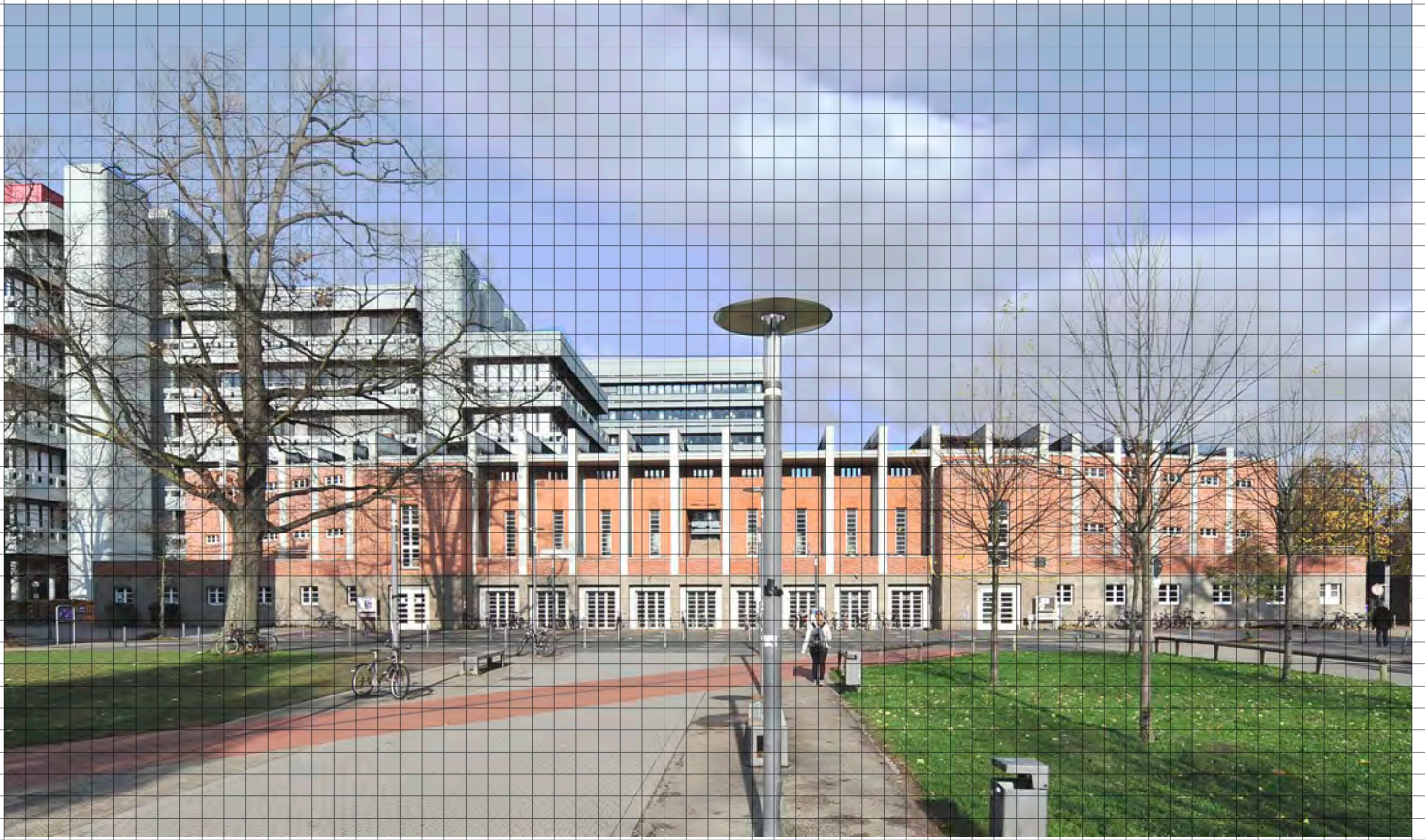
Due to a demand for space for building new institutes within the campus, the sports facilities were moved in 1960s.

A demolition was first approved in 1974, but after controversial discussion in the late 1970s, the

tribune became listed and preserved.

The tribune was renovated in 1995, and nowadays it is widely used for student events.

Since the relocation of the sports institute in 1979 to its own institute building, the tribune has become the site for the Arbeitskreis Kultur und Kommunikation (AKK), the student's association promoting sports and cultural events.





INTERVENTION CRITERIA(S)

Guided by well-renowned international architects and researchers as well as guest lecturers, students will engage in a continuous critical discussion about architecture, architectural education, and their role in the transformation of society, broadening their skills and privileging the processes and modalities of responsible making and learning.

C R I T E R I A S :

- 30m2 approximate
- Accomodate 20–30 people
- KIT students / AKK students association as the main target group
- Enable social encounters
- Ease of construction
- Assembled by students in nine days
- No fixings to the tribune building allowed

S I D E E F F E C T S

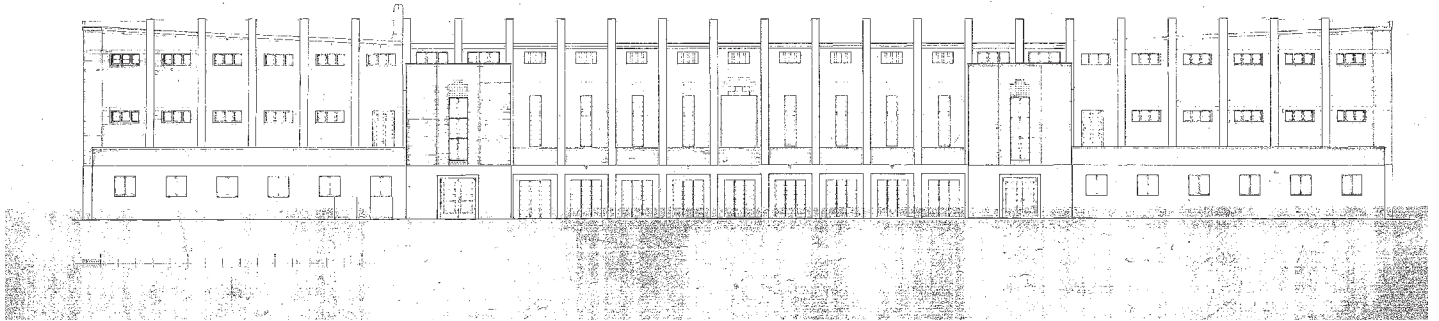
In order to transform the surroundings of the campus, the interventions should help us understand, critique and devise the different agendas that regulate the open spaces and the built form of the campus. Therefore, these interventions must be interrogated in relation to their duration and their effects.

The devices will have a temporal dimension; their removal and dismantling should be considered in the design proposal.

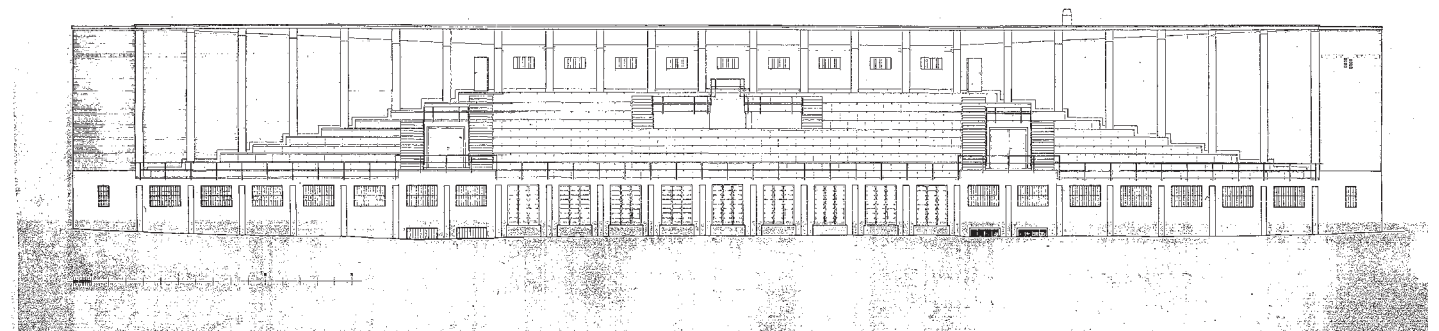
At the same time, the tribune is a listed building with an outstanding architectural quality that cannot be used due to an uncertain condition of the structural roof. The interventions hopefully will trigger the discussion about the tribune and its function in the campus.

GIVEN LOCATIONS:

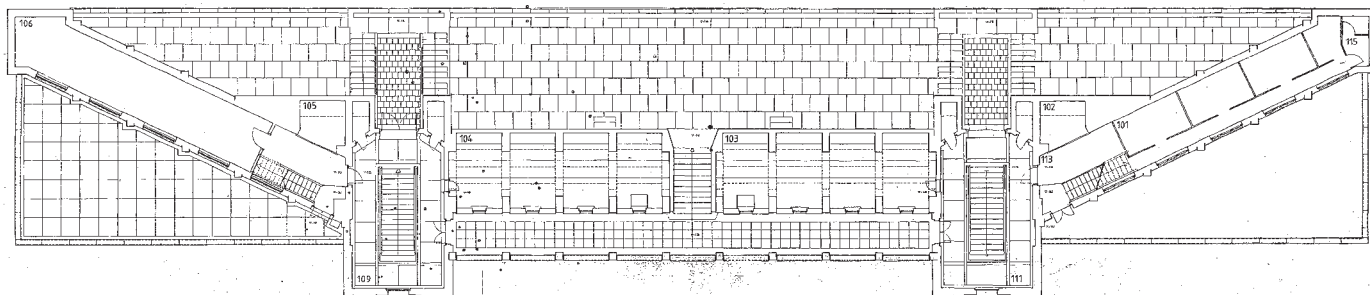
- 1 North tribune stands
- 2 South gallery facade
- 3 Corner wings roof Gymhall
- 4 Rudolph Plank Strasse (access road)



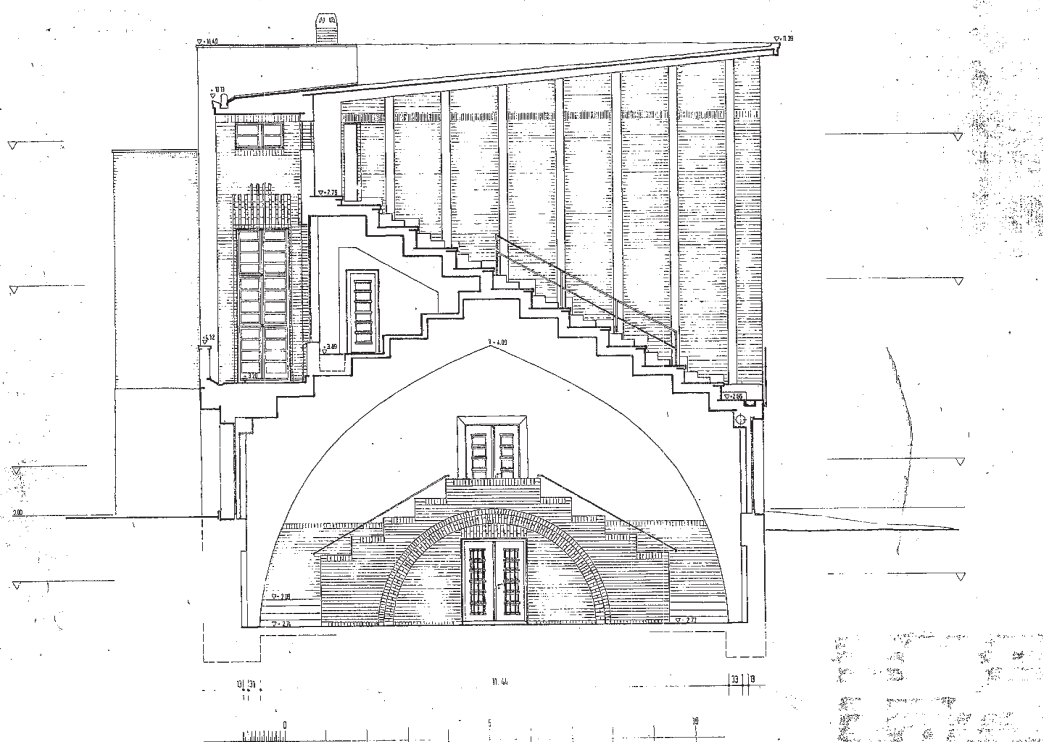
South gallery facade



North tribune facade



General plan



Cross section



Harvest source at Stuttgarter-Straße



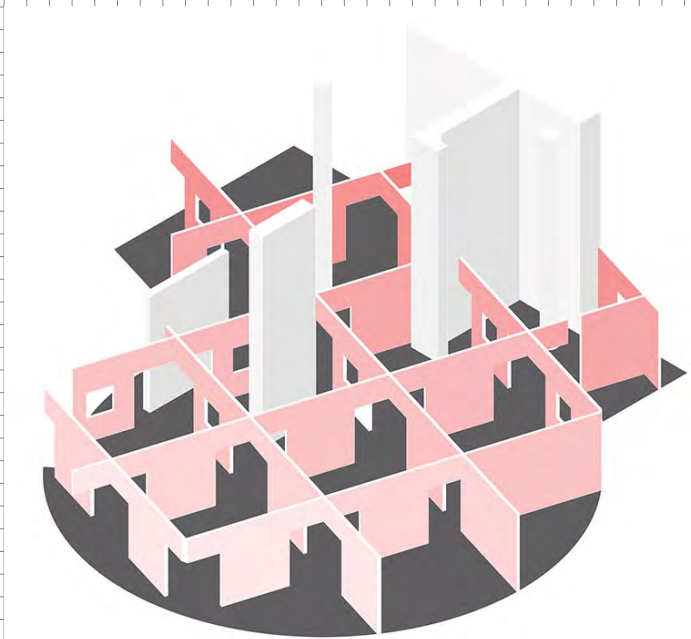
RESOURCES

The workshop will promote a culture of re-using and up-cycling existing building materials and building components; processes of harvesting, cautious dismantling and refinement will be the basis of the workshop's design strategies.

- 3m3 of material / intervention
- Harvested building materials from nearby locations in Karlsruhe
- Building materials provided by sponsors
- 2.000eur extra budget / intervention
 - Timber Profiles
 - Timber Boards (Plywood, OSB, MDF, ...)
 - Insulation wool
 - Metal Sheets (Corrugated Metal Sheets)
 - Paint
 - Textiles
 - Scaffolding
 - Screws, Nails, ...

R E S O U R C E S T O B E H A R V E S T E D :

- Building components: windows, doorsets, metal fences, timber fences
- Structural elements: metal poles, scaffolding poles, concrete blockwork, wooden profiles
- Roof materials: bitumen sheet, ceramic roof tiles, corrugated plasti sheet
- Paving materials: prefab concrete tiles
- Cladding materials: wooden planks, corrugated metal sheet, corrugated plastic sheet



Species of Spaces, MAIO



Kirschgarten Mensa, HHF



Nike Box MSK, KOSMOS

TUTORS

MAIO

MAIO is an architectural office based in Barcelona and New York that combine professional activities with academic, research and editorial ones. The practice has developed a wide range of projects, from housing blocks or urban planning to furniture or exhibition design.

HHF

HHF Architects was founded in 2003 by Tilo Herlach, Simon Hartmann and Simon Frommenwiler. Since then, HHF Architects have realized numerous projects in Switzerland, Germany, China, France, Mexico and the USA. The scope of work ranges from urbanism and large-scale construction to public pavilions and interior design. In addition to building, teaching is an important activity of the office.

KOSMOS

K O S M O S Architects is an office collaborating virtually, bringing together partners based in Basel, Moscow, Bangkok and New York. K O S M O S designs projects and environments of all types and scales: from a door handle to a city; from hardcore architecture to pop-up art installations. The office combines art and technology, global experience with respect to local context, European professionalism and Russian drive.

APPLICATION PROCESS

As student in either architectural, design or arts education you can apply to participate in KIT International Summer School by submitting the following documents.

Your application should demonstrate your interest and/or expertise in working on 1:1 works, as well as to show your enthusiasm for and/or experience with working with wood.

A P P L I C A T I O N D O C U M E N T S

① Motivation letter of max. 500 words, describing your interest in attending Summer School, your expectations and relevant experiences. It should include your personal data.

② A one-page document with your selected projects, combining your previous work and your favourite projects that could relate to summer school.

Please submit your application in a single combined pdf, not exceeding 3MB in size, named firstname_surname_letter.pdf and send it to bauplanung@ekut.kit.edu before the 30th of June.

W H A T D O W E O F F E R

- Working with internationally renowned professionals and academics, who will be leading the teams.
- Being part of a design team, in which your design skills will be challenged and tested.
- Professional working and equipment tools
- Building materials
- Accommodation for 9 nights
- 3 daily meals cooked by local chefs
- cultural evenings with guest lectures, music and film screening

IMPORTANT FACTS

A P P L I C A T I O N P E R I O D

Application is open until the 30th of June. We encourage everyone who wants to join the programme to hand in their application the sooner the better.

Feedback and acceptance to the Summer School will be sent two weeks after the application has been submitted; the earlier is the submission, the earlier the acceptance will be sent.

P A R T I C I P A T I O N F E E

The Summer School is a non-profit initiative, realised with the support of KIT faculty together with the sponsors and local partners. The cost for participating in the event is 350eur/student.

Payment instructions will be sent in the acceptance mail.

C E R T I F I C A T E

KIT will provide a signed certificate after attendance. You might need it for scholarships or references at your university.

The Summer School doesn't provide any ECTS credits, these must be provided and agreed with your home universities.

P R A C T I C A L I I - T I E S

- The Summer School is a laptop free event, promoting a hands-on approach
- The provided accommodation will be functional; bring your own sleeping bags or blankets
- Please notify us in case of any food allergies
- Summer in Karlsruhe can be hot in the daytime; bring sunscreen and comfortable summer clothes for working. In case of rain, bring waterproof jacket and shoes

SCHEDULE

	Saturday 03 Aug	Sunday 04 Aug	Monday 05 Aug	Tuesday 06 Aug
08:00h - 09:00h	students ar- rival + setting accomoda- tion	<u>breakfast</u> <u>lecture01</u> (KIT SAAI)	<u>breakfast</u> <u>lecture02</u> (MAIO)	<u>breakfast</u> <u>lecture03</u> (L.Ghinitoiu)
09:00h - 10:00h				
10:00h - 11:00h				
11:00h - 12:00h				
12:00h - 13:00h				
13:00h - 14:00h	lunch	lunch	lunch	lunch
14:00h - 15:00h	<u>Intro to the</u> <u>workshop</u> <u>and teams</u>	<u>Building</u> <u>workshop:</u> <u>harvesting</u>	<u>Building</u> <u>workshop:</u> <u>refinement</u>	<u>Building</u> <u>workshop:</u> <u>refinement</u>
15:00h - 16:00h				
16:00h - 17:00h				
17:00h - 18:00h				
18:00h - 19:00h				
19:00h - 20:00h	dinner	dinner	dinner	dinner
20:00h - 21:00h	<u>welcome</u> <u>party</u>	<u>dinner talk</u> <u>with guests</u>	movie night	<u>dinner talk</u> <u>with guests</u>
21:00h - 22:00h				
22:00h - ...				

Wednesday 07 Aug	Thursday 08 Aug	Friday 09 Aug	Saturday 10 Aug	Sunday 11 Aug
breakfast <u>lecture04</u> (KOSMOS)	breakfast <u>lecture05</u> (HHF)	breakfast	breakfast	breakfast
<u>Building workshop: assembling</u>	<u>Building workshop: assembling</u>	<u>Building workshop: assembling</u>	<u>Building workshop: assembling</u>	<u>Building workshop: assembling</u>
lunch	lunch	lunch	lunch	lunch
<u>Building workshop: assembling</u>	<u>Building workshop: assembling</u>	<u>Building workshop: assembling</u>	<u>Building workshop: assembling</u>	<u>final public pre-sentation</u> <u>+</u> <u>tour</u>
dinner	dinner	dinner	dinner	<u>final grill</u>
<u>concert</u>	<u>dinner talk with guests</u>	<u>building workshop</u>	<u>building workshop</u>	<u>final party</u>

Impressum

KIT (Karlsruher Institut für
Technologie)
Institut Entwerfen, Kunst
und Theorie
Fachgebiet
bAuplanung und entweRfen